

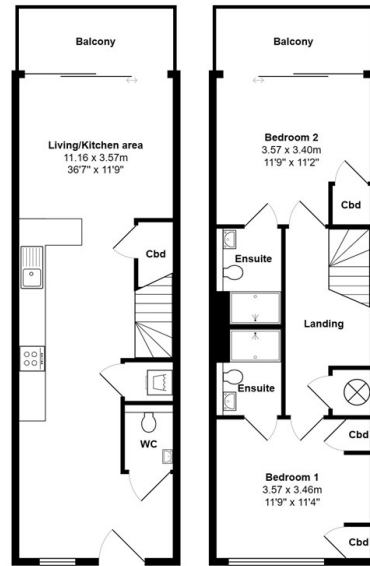


28 Fen View Court, Cambridge, CB4 1RF

£1,850 PCM

- AV: 28TH AUGUST 2024
- OPEN PLAN LIVING
- WALKING DISTANCE TO CAMBRIDGE NORTH TRAIN STATION
- 2 BEDROOMS
- UNFURNISHED
- 2 BATHROOMS
- GOOD ACCESS TO A14/M11

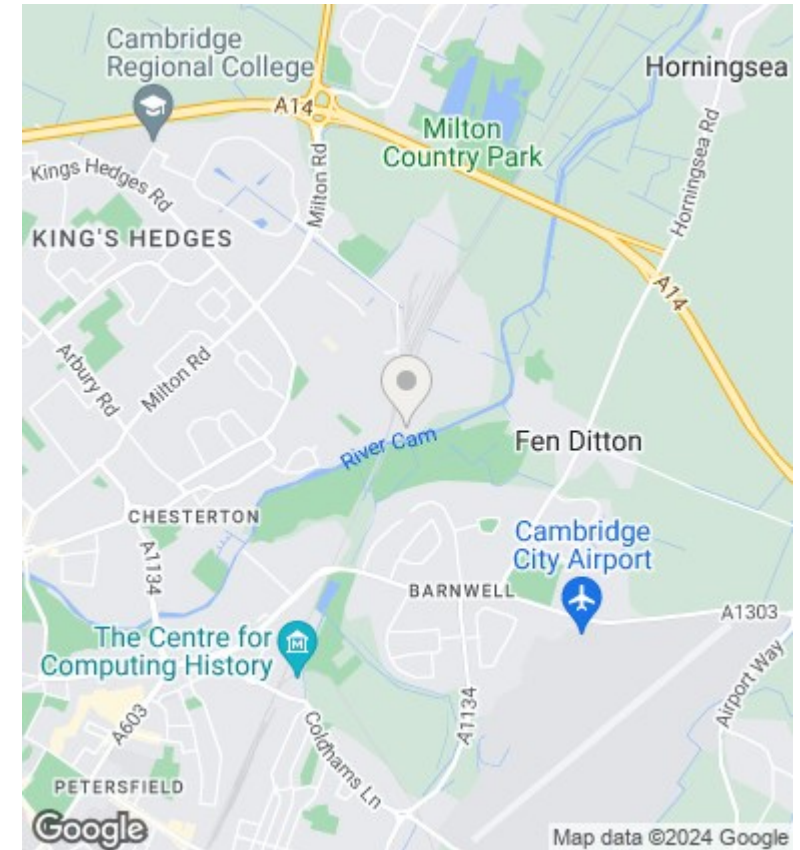
Fen View Court, Cambridge, CB4 1RF



Total Area: 79.6 m² ... 857 ft² (excluding balcony)

All measurements are approximate and for display purposes only

Plan prepared by charlesjharrison.co.uk



Directions

Viewings

Viewings by arrangement only. Call 01223414400 to make an appointment.

Council Tax Band

EPC Rating:

| Energy Efficiency Rating | | |
|--|-------------------------|-----------|
| | Current | Potential |
| <i>Very energy efficient - lower running costs</i> | | |
| (92 plus) A | | |
| (81-91) B | | |
| (69-80) C | | |
| (55-68) D | | |
| (39-54) E | | |
| (21-38) F | | |
| (1-20) G | | |
| <i>Not energy efficient - higher running costs</i> | | |
| England & Wales | EU Directive 2002/91/EC | |